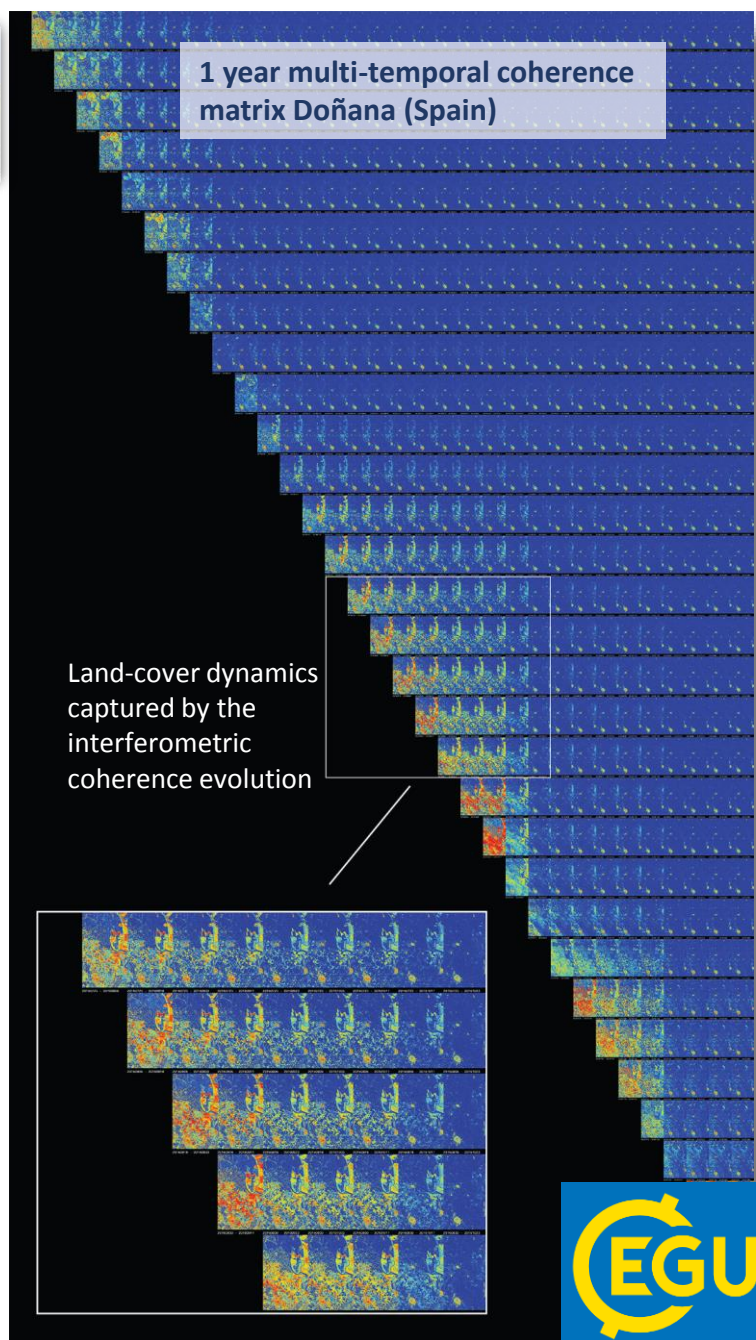
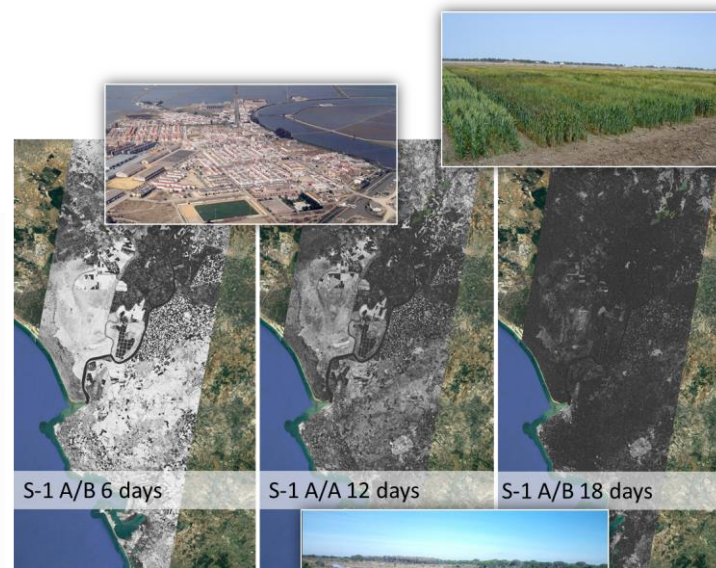


SInCohMap Project

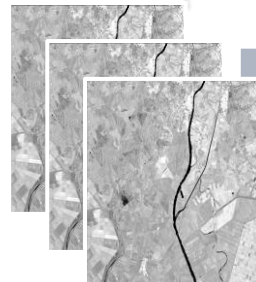
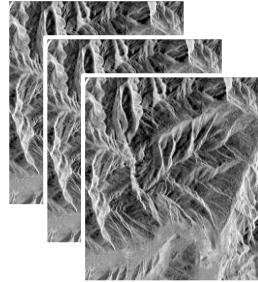
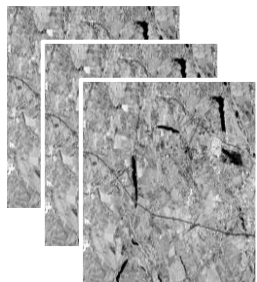
F. Vicente-Guijalba, E. Garcia-Boadas, A. Jacob, C. Notarnicola, J. M. Lopez-Sanchez, C. Lopez-Martinez, D. Ziolkowski, K. Dabrowska, Z. Bochenek, E. Pottier, J. J. Mallorqui, M. Lavallo and M. Engdahl

Objectives

Develop, analyse and validate novel methodologies for **LAND COVER & VEGETATION MAPPING** using **SENTINEL-1 INTERFEROMETRIC COHERENCE EVOLUTION**



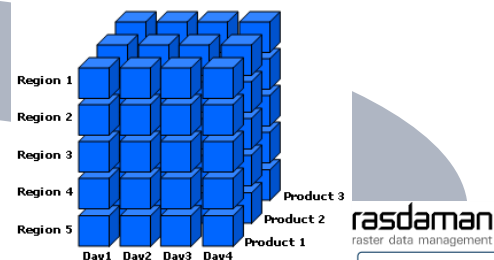
Pre-processed InSAR stack sites



West Wielkopolska (Poland)

South Tyrol (Italy)

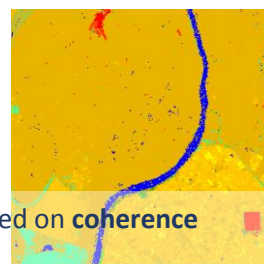
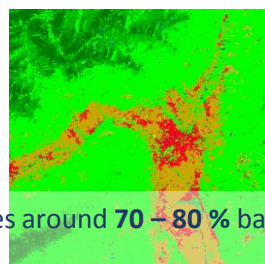
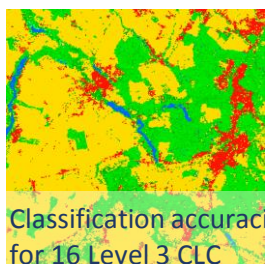
Doñana (Spain)



Sentinel Alpine Observatory



WCS/WCPS



Classification accuracies around 70 – 80 % based on coherence for 16 Level 3 CLC

<https://sincohmap.org/>

